



FONT DEL PIC FONT

VELLA ROUTE

Sant
Hilari
Sacalm



Sant Hilari Sacalm

LesGuilleriesKm0.cat

Sant Hilari Sacalm is the **capital of Les Guilleries**, the km 0 of a wild and -still- little-known massif near the Montseny, a mountain range. A place where nature, forests and water generously give us innumerable emotions and experiences to enjoy the privileged environment which surrounds us.

Les Guilleries is the ideal place for all nature lovers searching for authentic havens where you can connect with yourself and awaken all your senses. A place where you can live all kinds of experiences, such as enjoying cool moments drinking the natural water that comes from more than **100 municipal springs**. You can also have a bath in the transparent waters of some **streams or pools** hidden by the environment, or simply sit and close your eyes to listen to the force of the water falling from a waterfall while letting go your thoughts for a few moments.

For those who want to feel the adrenaline, you can **practice different high-intensity sports** such as hiking along long paths, mountain biking and trail running, among others. However, for those who want to enjoy a calmer experience, there are several routes to go for a walk along pleasant paths which allow you to **find out the most authentic and pure nature** of Sant Hilari Sacalm.

Otherwise, if you are searching for silence, you just need to relax in some of the town's viewpoints and enjoy the panoramic views that its landscapes give us, while listening to the birds singing and the rustling of the leaves moved by the wind.

So, Sant Hilari is a **privileged place** where nature lovers can **enjoy and feel it in a thousand different ways**.



Index

6	General information
8	Flora
13	Fauna
15	Town hall and church
16	Font del Cirerer
17	Font del Pic
19	Parc de la Font del Pic
20	Mural BestiArt
22	Bottling plant Font Vella
25	Font Vella
27	Jaumet del Flabiol
29	Masia Can Jové and Balneari Font Vella
32	Recommendations when going to the forest



FONT VELLA

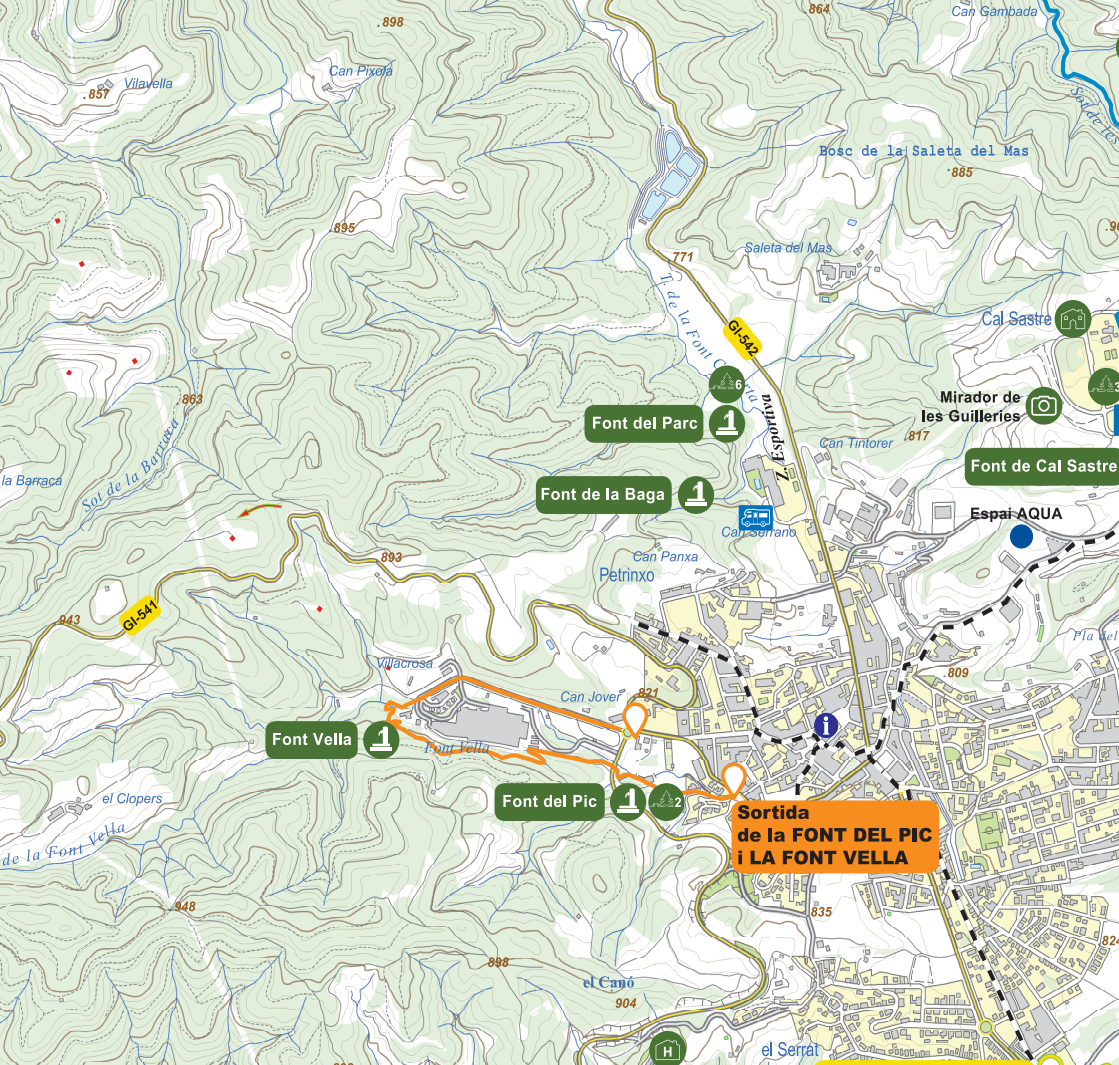
Informació general

The route between Font del Pic - Font Vella consists of a **circular route** along a **few kilometres**, which has an **easy level of difficulty** through the forests near the town of Sant Hilari Sacalm. Most of the route is along easily accessible and well-signposted forest paths, except for a small stretch that passes through an urban promenade in the municipality.

The forest paths of the route are shady and cool in summer, passing by chestnut groves, areas with banana trees and other trees such as acacias.

Furthermore, along the way you can get to know **different points of cultural and natural interest** such as **Font del Pic**, a natural water spring located in a park where Vallicrosa stream passes and where there is a small picnic area; **Font Vella**, a natural water spring declared of public utility in 1956 whose water is currently bottled and distributed throughout Spain; or the **BestiArt mural**, an artistic mural painted by Excèntrica, an artistic association, where the autochthonous fauna and flora of the area is represented.





Symbols and markers



Route markers

This route is marked in orange in this way:



In addition, there are also small wooden signs along the route with a yellow mark indicating the way to follow.

Use wikiloc and see the path and all the information at the following link:
<https://ca.wikiloc.com/rutes-a-peu/ruta-font-del-pic-font-vella-52832094>

Flora

The flora found along the route are species characteristic of areas of wet weather. The most common trees and shrubs found along the paths are:

HORSE CHESTNUT TREE (*Aesculus spp.*)

It is a deciduous tree that usually grows on sandy soils and can be **over 20 meters high**. It has a dense thick crown. In Europe, it is usually used as an **ornamental tree**, that is why it can be found in promenades and squares in the town, such as Passeig de la Font Vella or Plaça Gravalosa, among others.

The wood extracted from this tree is white and soft, and it is often used as **firewood or to make boxes**. Its fruit is the horse chestnut, very similar to the chestnut, although it is usually larger and does not have a tail. In the past, it was believed that carrying a chestnut in your pocket cured headaches, bruises and toothache.

SWEET CHESTNUT (*Castanea sativa*)

It is a deciduous tree that can grow **up to 20 meters**. Its leaves are large, long and serrated. Its fruit is the **chestnut**, which is edible and really prized as a food in this area.

DOUGLAS FIR (*Pseudotsuga menziesii*)

It is a conical evergreen tree which grows in a **conical shape** and can grow up to **50 meters**.



Flora

From its bark, we can get **turpentine**, which is used to make paints and varnishes. Its wood is used to make **furniture, beams and paper**. From its bark as well as from its leaves, we can get turpentine oil, which is used as an ointment.

Its fruit is the **pineapple**, which can reach 10-15 centimetres.

Nowadays, in Sant Hilari there are different fields where you can see large fir plantations, which are sold at **Christmas**. Formerly, most of these fields grew potatoes.

CEDAR (*Cedrus*)

It is a type of **coniferous tree** in the plant family Pinaceae. It is a tree with a **big conical-shaped crown**. Its wood is quite fragile, which limits its use in carpentry. However, it is commonly used to create **musical instruments and to make handicrafts**. It stands out for its peculiar smell, which scares away insects and worms.

EUROPEAN BEECH (*Fagukks sylvatica*)

Also known as common beech, it is a deciduous tree which can grow up to **30 meters**. Its leaves and bark stand out for their medicinal properties. They have traditionally been used as an **antiseptic, antidiarrheal, healing and analgesic, among others**. It was popularly used to



Douglas fir

Flora

treat the flu, colds, bronchitis and diarrhoea.

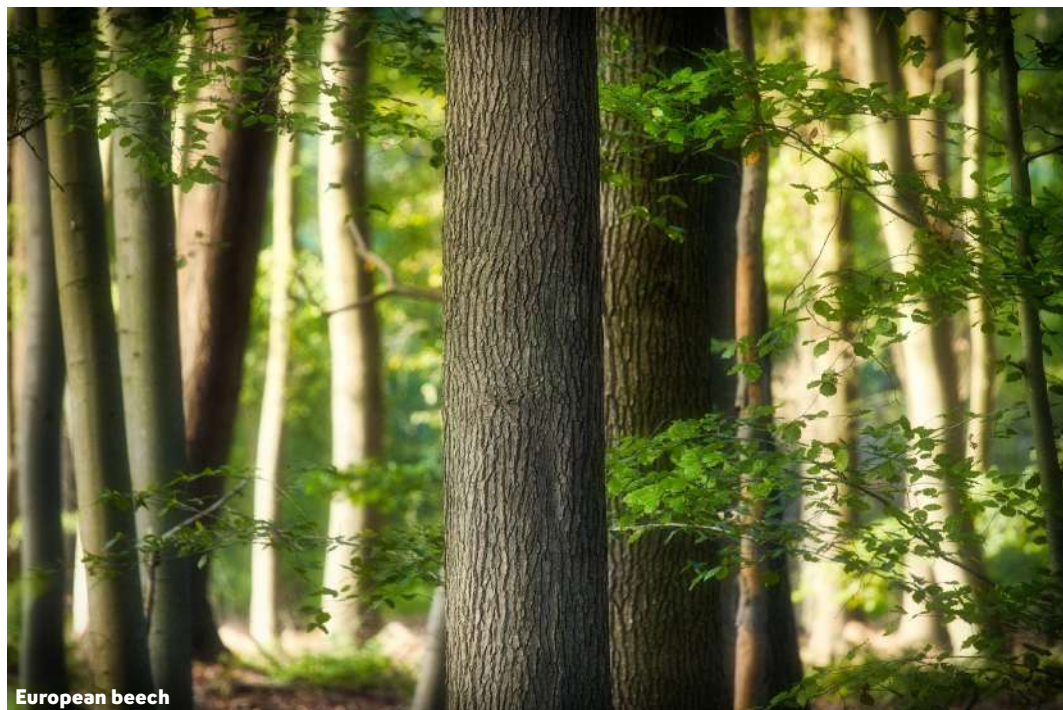
Its wood is highly prized in **carpentry and turnery**. Formerly, it was also used by charcoal burners **to make coal**.

Its fruit is edible, although you should not consume an excessive amount, since it can cause **food poisoning**. It tastes like walnuts and it can be eaten raw or toasted with salt.

ALDER (*Alnus glutinosa*)

The alder is a deciduous tree which can be **20 meters high**. It usually lives on the banks of rivers and streams, forming part of **riparian forests**. That is why on this route it is present next to the Vallicrosa stream.

Its wood is highly prized because **it is not damaged** when submerged in water. Its fruit is small, inside a kind of small compact green pineapple which opens in autumn and the fruit falls down.



European beech

Flora

Concerning bushes, a species predominates along the route:

HOLLY (*Ilex aquifolium*)

Also known as **English holly**, it is native to Europe, West Asia and North Africa. Although it does not usually grow much, it can also be **20 meters high**. Their leaves have a wavy and burry margin, and they are bright green on the face, and pale green on the underside.

Its **fruit** is small, round and reddish. It is resistant to cold and its consumption is toxic. It is a protected species and its collection is forbidden.



Holly



Guilleries chestnut

Fauna

The fauna in Les Guilleries is very diverse and in this route, we mainly focus on amphibians and birds.

FIRE SALAMANDER (*Salamandra salamandra*)

It is an amphibian of the **salamander** family, which is usually about 20cm long. It has got a smooth black skin with very bright yellow spots on top. It lives in wet environments and is considered a bioindicator of the quality of the water in which it is found.

EUROPEAN ROBIN (*Erithacus rubecula*)

Small rounded bird about 14 cm long. Although it is gossipy and abundant, it is always **spotted alone**. It especially lives in wet forests, orchards, parks and gardens. It is brownish with a reddish spot on the chest. It eats insects, earthworms, fruits and leftover food. Many specimens arrive in central and northern Europe during the winter. It gets close to humans, looking for food in grain feeders, especially during the winter, when it is cold and snowy.

WHITE WAGTAIL (*Motacilla alba*)

Bird about **18 cm long**, white, grey and black, and with a long tail. It walks quickly on the ground, moving its head and tail very elegantly, close to water, crops and near paths. It nests in buildings, mostly under roofs. It eats insects and arachnids, and it usually nests with hair, wool and feathers, taking advantage of cracks between rocks, holes in building and under the roof of houses. It lives near streams, orchards and areas with low vegetation; we can also find it in inhabited areas.



Fauna

COMMON BLACKBIRD (*Turdus merula*)

It has got a **singing** which is easily heard in spring, both at sunrise and sunset. Black bird except for the orange beak. It lives in wet forests and can also be seen in the gardens of towns and cities. It walks and jumps, and its singing is very peculiar and prized. Adult specimens usually live in the same territory all year, so they know the environment very well when looking for and finding food such as insects, earthworms and fruits.

Along the way, different **nest boxes** and troughs can be seen. Their main purpose is promoting biodiversity in the area. Moreover, birds help regulate insect pests and prevent the use of pesticides and chemical products.

Although they cannot be seen along the way because they have nocturnal habits, it is also important to highlight two species of mammals found in Les Guilleries, the fox and the wild boar:

FOX (*Vulpes vulpes*)

The fox (in Catalan, "guilla") has given **its name to** Les Guilleries massif due to the great abundance of specimens that formerly lived in the area. It is about 80 cm long, and its tail is 40 cm long. It has pointed ears, a triangular head and an elongated snout. Slim-bodied, it changes its fur every year, it is reddish brown, except for the belly and the end of the tail, which are white. It is a carnivorous mammal which eats rabbits, hares, mice, rats, birds, fish, moles and insects. It also eats eggs, fruits and leftover food. They live in forests, in areas near towns and cities, and it moves in the evening and at night. During the day, it hides in the bushes or in the burrows that they dig into the ground. The fox has an excellent sense of smell as well as good hearing and eyesight.



Places of interest - Church and Town Hall

This route goes across different areas and buildings of historical, patrimonial and artistic interest which are representative of the capital of Les Guilleries.

If the route begins in the Tourist Office, you can go past **three points of interest** near the starting point, such as the church, the town hall and the Font del Cirerer.

CHURCH

The church is situated at the centre of the village and it is dedicated to Sant Hilari de Poitiers, son of an aristocratic family raised in paganism. The building is formed by different styles, mainly **romanic and gothic**. This diversity is because of the different reforms and extensions which have been done during the following centuries: XII, XV, XVI, XIX and XX.

TOWN HALL

It is one of the most emblematic heritage buildings in the town. It was built in 1786 and it was the **town hospital**. Later, the semi-basement floor was used as a **school** and, when the public school was built, the ground floor kept housing teachers for many years. Finally, in 1893, the town council received the right to use the building as a **town hall**.



Church



Town hall

Places of interest - Font del Cirerer

The building has got two floors on the main façade (carrer Rectoria) and three on the rear façade (Plaça de l'Ajuntament), and it stands out for its **neo-Gothic façade**, with openings on the ground floor, the portal and the side window with a pointed arch.

FONT DEL CIRERER

The Font del Cirerer is a **natural water spring** built by the town council in 1939. It stands out because it was the first spring in the municipality to be **declared for public use**. This, located in Plaça de l'Ajuntament, was buried because of a **flood** and a new one was built right on the street above, on Passeig de la Font del Cirerer. Later on, the old fountain was restored. That is why there are currently **two springs** with the same name: the old Font del Cirerer and the new one.



Antiga Font del Cirerer

Places of interest - La Font del Pic

FONT DEL PIC

It is a natural water spring which dates back from the 19th century and has the same origin as the old Font del Cirerer. It was formerly known as "Font del Pico-Pico"; later, it became "Font del Pico" and from there, the present name: Font del Pic.

In 1959 it was declared a **water of excellent quality and therapeutic uses**. That is why the park in Font del Pic used to be a **meeting point** for holidaymakers and people from the town who went there to enjoy the quality of the water and the freshness of the environment while socializing with the rest of the holidaymakers and residents.

Nowadays, there is only **one spring** in this fountain, but formerly there were three. You can still see the mark of the other two. Moreover, behind the fountain there is a door which may lead to the old mine that existed before the arrangement made in 2009.

Some authors wrote some verses about this spring. It highlights ones from **Agustí Torrent Coma** which says:

"No es la Fuente del Pico
un manantial tan vulgar,
todo mortal pobre o rico
esta Fuente yo le indico,
si su salud quiere hallar."



4 - SANT HILARI SACALM. La Font d'en Pico-pico



Font del Pic



Places of interest - Parc de la Font del Pic

PARC DE LA FONT DEL PIC

The park in Font del Pic has undergone a lot of modifications over time. The most important was in 2009, when a **project was carried out to restore the Riera de Vallicrosa** and improve the river space. The fact that it is a floodable area was taken into account, the riparian vegetation and its function of biological corridor for the stream were respected.

The restructuring involved the removal of walls, foundations and other structures which were not typical of the natural structure of the stream. Afterwards, a bioengineering work was carried out through a Krainer construction, which consists of a gravity wall formed by a trunk structure combined with living plants.

Currently, in addition, you can find a **well** where, in the 1970s, there was the **factory that bottled and sold the water from this spring**, as well as a playground and picnic area.



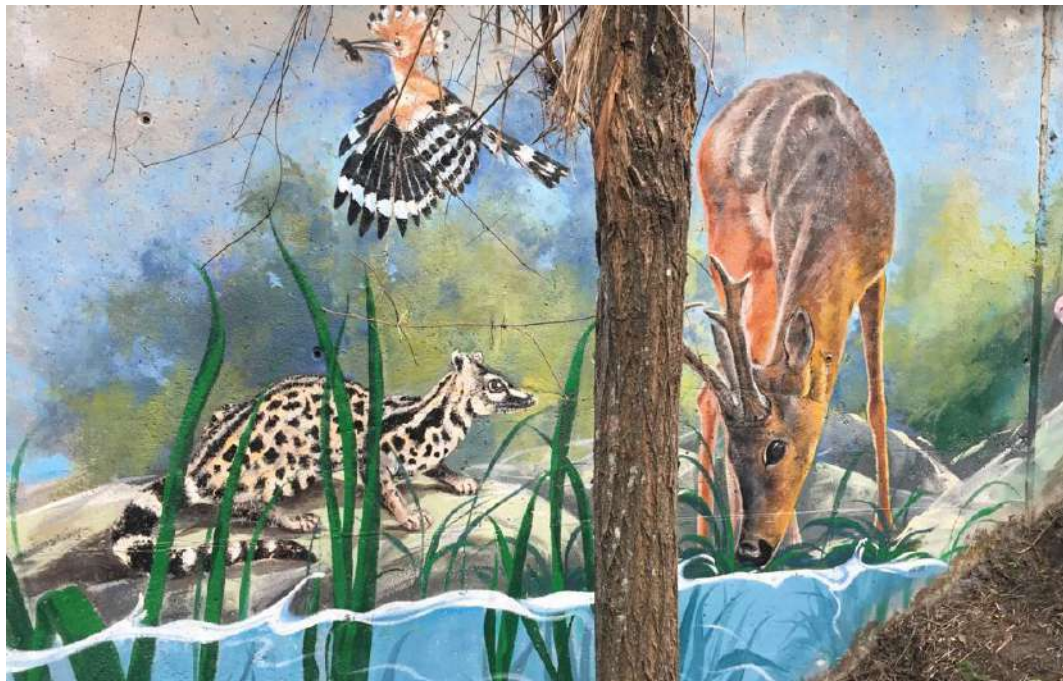
Places of interest - Mural BestiArt

MURAL BESTIART

Just after the park in Font del Pic and following the signs of the route, there is a small tunnel that goes just below the GI-541 road. Inside this tunnel is the **Mural BestiArt**, a mural made by the local artistic association **Excèntrica**, a non-profit association entirely dedicated to art in all its expressions.

It was designed by Joan Cantal, an artist from Osor, and it was painted during the autumn of 2019. A total of **16 artists** from the local artistic group took part in this project.

The work stands out for its large dimensions as it is about **200 square meters**, and because it is inspired by the most representative native vegetation, flora and fauna of Sant Hilari and Les Guilleries. Some of the animals of the physical and aquatic environment represented in the mural are the roe deer, the genet, the hoopoe, the corncrake, the green frog and the trout, among many others.





Autumn at les Guilleriès



Places of interest - Bottling plant Font Vella

BOTTLING PLANT FONT VELLA

Along the way, you can see from different points the bottling plant of Font Vella. The company was founded in 1943, and in 1974 began to be part of the Danone group.

This plant is one of the main employers in the area and it is characterized by its strong commitment to the natural environment and the local administration, with whom it actively collaborates for the protection of the natural environment where it is located.

The water extracted from the forests of Les Guilleries is **demineralised and it is suitable for low-sodium** diets and preparation of baby food. It stands out because it is **one of the most consumed** mineral waters in Spain and because of its commitment to the use of recycled plastic in its bottles. In 2009, it introduced this material for the first time in its 1.5-liter bottle and it is committed to having all its bottles with 100% recycled plastic in 2025.

In addition, it is working to be a zero-emission company and is committed to doing a responsible use of water quality and quantity.



Places of interest - Bottling plant Font Vella

WATER COMPOSITION

CALCIUM 42 MG/L

SODIUM 12,5 MG/L

MAGNESIUM 11,3 MG/L

BICARBONATES 143 MG/L





Path from Font del Pic to Font Vella

Places of interest - Font Vella

FONT VELLA

Font Vella is a natural water spring which was first analysed in 1917 and was **declared for public use** on 27th March 1956. The spring analysis described it as a **very pure and superb water**.

In the 20th century, Font Vella became an **emblematic place** in the town where the first holidaymakers who came to spend their summer in Sant Hilari went to take the demineralised water from this spring in order to complement the intake of waters from the Font Picant, which were calcium and bicarbonate-rich waters.

Over time, more or more people summered in the town, which provided economic growth in the town. Apart from their healthy interest, the springs soon became a **meeting point** where young and old had the water with anise and people spent the summer afternoons in the cool under the shade of the trees that are still preserved in the park.



Places of interest - Font Vella

To complement the offer to the park visitors, a hut was built, where they could buy food and all kinds of drinks.

Some years later, Font Vella also became a large bottling and distribution company which has spread the name of the town to all corners of the country.

Nowadays, there is a **monolith** at the top of the spring, work of the sculptor **Domènec Fita**. On it, there are sculpted some verses **Jacint Verdaguer**, one of the great Catalan poets, wrote in 1983 on the occasion of his visit to Sant Hilari to talk, in a process of reconciliation, with Bishop Morgades. His verses say, Tenia set d'aigua pura, lo meu cor enfebrosit, i enyorava la dolçura de la deu de l'infinit. Com el raig d'eixa Font Vella aboqueu vostra canella en mon cor que s'esbadella i em veureu, Jesús, guarit. In English, we could translate them as I was thirsty for pure water, my heart was feverish, and I missed the sweetness of the fountain of infinity. Like the lightning of that Font Vella, pour your cinnamon into my shattered heart and you will see me, Jesus, healed.



Places of interest - Jaumet del Flabiol

JAUMET DEL FLABIOL

A figure really linked to Font Vella is **Jaume Traverries i Riera** (1871–1955), known to holidaymakers as "Jaumet del flabiol".

Jaumet took daily walks to Font Vella in order to load pitchers of water and distribute them among the different holidaymakers in the town in return for a tip.

When he was young, he lost his speech due to an accident, so he used his "**flabiol**" (a Catalan instrument similar to a flageolet) to communicate with people. He always played the same melody of **thirteen notes**, which everyone knew by heart.

The love that people felt for him was so big that a group of holidaymakers who came to Sant Hilari gave him a cart so that he could carry the pitchers and make his work easier. He made so many journeys with this cart that it was soon damaged. Afterwards, the town council and the group of holidaymakers gave him the second cart, which is still in exhibition at the Tourist Office.

In 2019, the town council of Sant Hilari dedicated a **life-size statue** to this very important figure in our town, which is located on Carrer Vic, in the middle of the way he used to take to get to Font Vella.





Jaumet statue

Places of interest - Masia Can Jové and Balneari Font Vella

MASIA CAN JOVÉ

It is a 17th century farmhouse turned into a residential house. It preserves some original elements such as the main door and some windows with a monolithic lintel. The ensemble has been very altered as a result of modern renovations which have added an upper floor with a gallery of semi-circular arches. The section attached to the left side of the building dates from the beginning of the 20th century.

BALNEARI FONT VELLA

The current Balneari Font Vella is a **restored historic** building located just next to the park in Font del Pic.

This heritage building used to **be a nunnery**, known as Villa Josefina or Torre dels Bojos due to the ignorance the people of the town had about the people who lived there. An interior restoration of the building was done in order to adapt it to the current spa-hotel. The exterior was maintained with the same characteristics as it had in 1908 in order to preserve its architecture.



Masia Can Jové

Places interest - Masia Can Jové and Balneari Font Vella

The main façade has got two Ionic-style columns with a balcony that projects from it with a crafted lattice rail. Right next to the main door, there are two coupled windows. The other windows in the building are rectangular with keel arch crowns at the top. Formerly, it was painted salmon, but it was remodelled and painted blue.

Nowadays, the hotel has got six emblematic rooms which combine the modernity of the latest trends with the majestic style the whole building has.



Castanut from Passeig de la Font del Pic



Recommendations when going to the forest:



Plan your trip well before going into the woods



Before setting off, keep the weather in mind



Adapt your equipment (clothing, shoes...) to the activity.



It is advisable to bring some food, water and a mobile phone with the battery fully charged.



Calculate the time of the activity well. Count how long the trip will take, so that you won't have to leave when it gets dark.



Call the emergency teams at 112 if you need so.



If you see any incident along the route (fallen trees, broken signs, etc.), you can send the photos and location to the email oficinaturisme@santhilari.cat or by Whatsapp to the phone 972 86 96 86.



In case of bringing a dog or a pet, it is advisable to bring it tied. You can find cattle grazing near the routes.

And remember that in Sant Hilari Sacalm we take care of nature, please:



No deixis ni llencis deixalles al bosc



No trenquis ni arrenquis vegetació



No encenguis foc si no és en espais habilitats.

*Del 15 de març al 15 d'octubre no es pot fer foc als terrenys forestals sense autorització.

Sant Hilari Sacalm

www.lesguillerieskm0.cat

Of. Turisme Can Rovira
972 86 96 86



+34 972 869 686



@lesguillerieskm0.cat



Turisme Sant Hilari Sacalm



@guillerieskm0



Ajuntament
de Sant Hilari Sacalm



Sant Hilari
Sacalm
LesGuilleriesKm0.cat

