

# Montseny - Guilleries trail

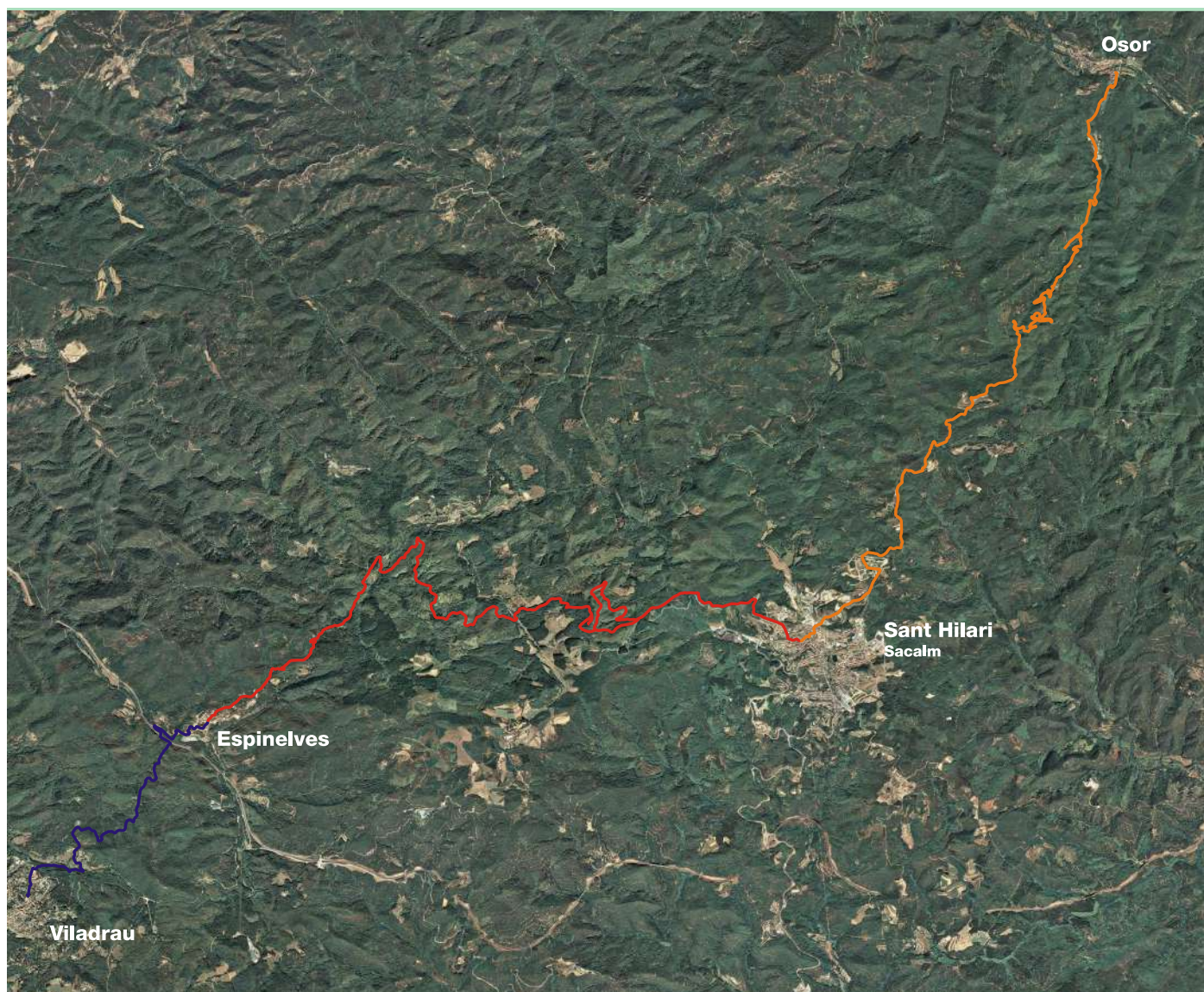
---




Sant Hilari  
Sacalm

# Recovery of the ancient road on foot between Osor, Sant Hilari Sacalm, Espinelves i Viladrau

The route connects the villages of Osor, Sant Hilari Sacalm, Espinelves and Viladrau. It allows you to go from Les Guilleries to Montseny, discovering these places and enjoying good panoramic views over the forest and the peculiar topography of Les Guilleries, with the backdrop of Montseny to the south and the cliffs of Collsacabra to the north.

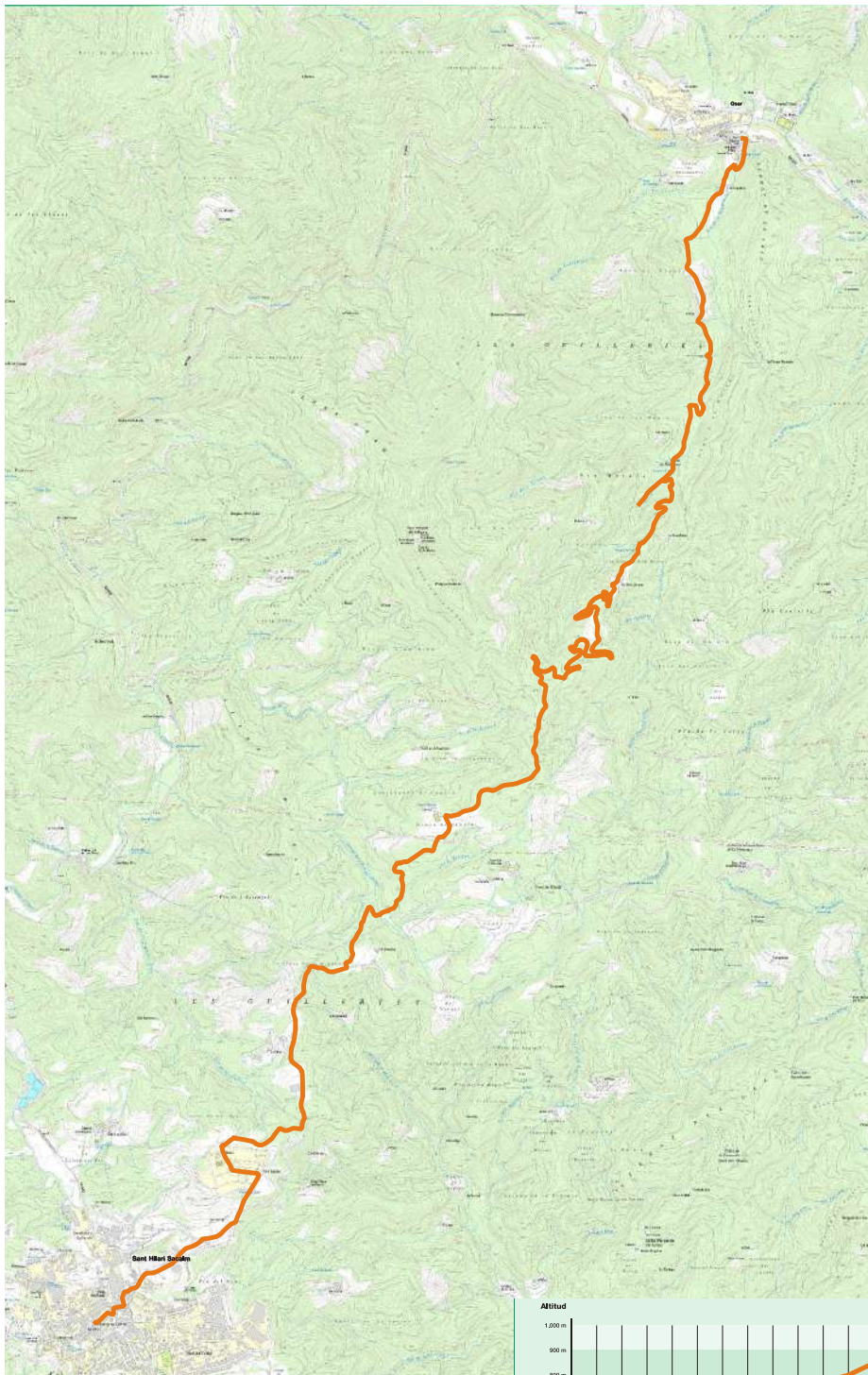


It is a route that can be done on foot or by mountain bike. It has a total distance of **31,4 km** which can be done in approximately **10 hours and 30 minutes**. However, this can be fragmented into three different stages.

The path is indicated with different green signs along the way. Likewise, you can also find signs with this mark  that indicate both directions of the route.



# Stage 1: Osor - Sant Hilari Sacalm



From the village of Osor, walk to the Borrell spring and, shortly after, turn left onto a soil path that leads to the Ripoll and the Verge spring. From here, the route follows the old royal road to Riba d'Amunt and Coll de Llevanyes, the highest point of this stage (960 m).

At this point, the path begins to descend slowly towards the town of Sant Hilari Sacalm, crossing the torrent of the Gavatx spring, the stream of la Masó and the urbanization of Cal Sastre. You will enter the village through the old district of the Hospital.

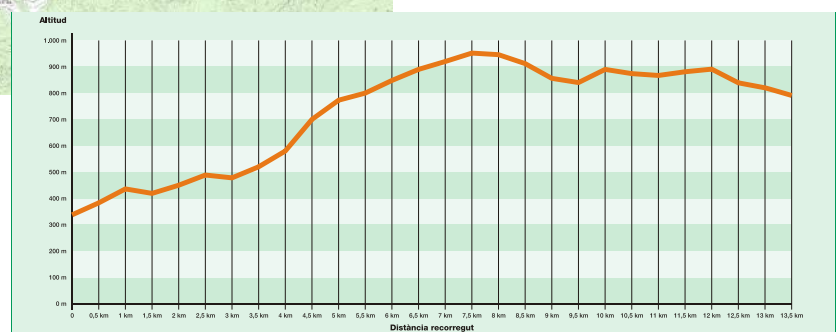
**Total distance:** 13,1 km

**Gradient ascent:** 705 m

**Gradient descent:** 245 m

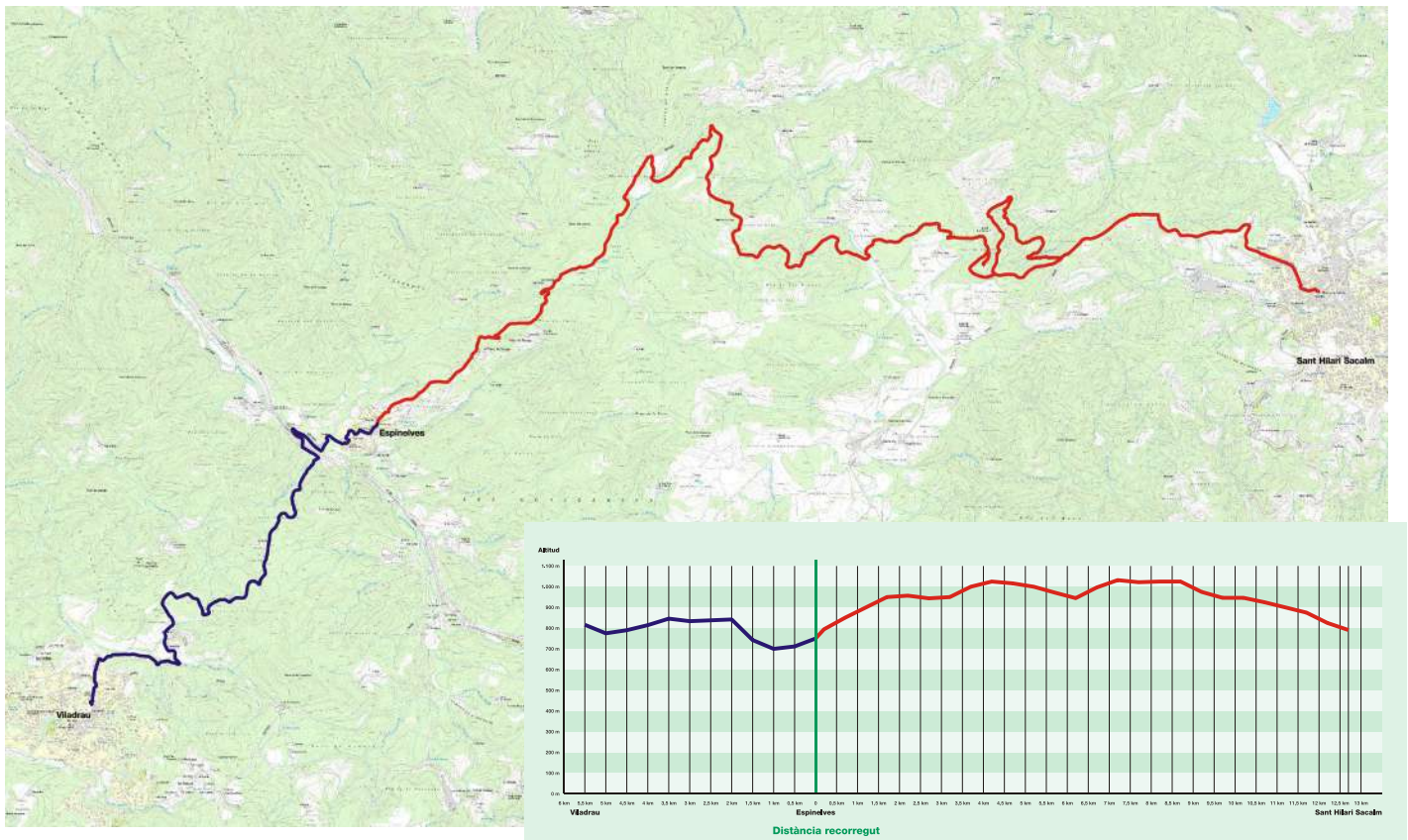
**Markers:** Green marks

**Duration:** 4 hours 30 minutes



## Stage 2 and 3:

# Sant Hilari Sacalm - Espinelves - Viladrau



### Stage 2: Sant Hilari Sacalm - Espinelves

The path leaves the village of Sant Hilari Sacalm through the Petrinxo district, parallel to the GI-541 road. After the Gurb spring, the route climbs to Mascarbó Castle, the highest point of this stage (1,060 m). From this point, the route, in slight ascents and descents, goes towards the village of Espinelves passing by the source of La Cau, the Pla de la Creu and the Veïnat de França.

**Total distance:** 12,7 km  
**Gradient ascent:** 385 m  
**Gradient descent:** 455 m  
**Markers:** Green marks  
**Duration:** 4 hours

### Stage 3: Espinelves - Viladrau

The path leaves the village of Espinelves in the direction of the Eix Transversal (C-25), crosses the Espinelves stream and climbs towards the village of Viladrau through el Sot de la font Fresca. The route, on a slight ascent, crosses the country houses of Can Feliu, Masmiquel and Casadevall.

**Total distance:** 5,6 km  
**Gradient ascent:** 100 m  
**Gradient descent:** 20 m  
**Markers:** Green marks  
**Duration:** 2 hours

